



America Sews

with Sue Hausmann®

2905 Portrait in Stitches With Julie Mallory

Today many people are researching their past in family genealogy and others are creating scrapbooks and memory pictures for the present. On this program Sue and Julie Mallory representing American Efrid/Robison Anton Threads taught about embroidering picture memories!

One of the challenges with creating pictures in stitches has been to find the right colors of threads for flesh tones. Robison Anton has listened to our requests and has many Robison Anton 40 weight Rayon flesh tone threads. The Medium/Dark Flesh Tones include Robison Anton 40 weight Rayon colors 2593 Cottage Beige, 2336 Amber Beige, 2298 Taupe, 2273 Tan, 2568 Perfect Tan, 2338 Bamboo, and 2299 Salmon. The Light Flesh Tones include Robison Anton 40 weight Rayon colors 2335 Ivory, 2413 Flesh, 2377 Bisque, 2473 Opaline, 2475 Mocha Cream, 2203 Gold, and 2253 Flesh Pink.

The quilts on the set of America Sews were created in the Husqvarna Viking 4D Family Portrait Embroidery Software program. The program is multi-format so it can be used with all brands of embroidery machines. It is the first program for embroidery machines that combines a complete genealogy program with a wizard that creates stitches from any picture. You can purchase the Husqvarna Viking 4D Family Portrait Embroidery Software as a stand alone program or to add to your 4D Embroidery, 4D Embroidery Extra or 4D Professional Embroidery Software.

The first quilt is the Youngberg-Hausmann Genealogy Quilt. It was made by VSM Software Ltd, the company that developed the 4D Family Portrait Software as a gift for Sue and Herb. Pictures of five generations of their family and information about each person are stitched in a family tree onto this queen size quilt and the quilt is quilted with small crosses which is one of the many elements in the program to be used for quilting and embellishment.



Julie Mallory and Sue Hausmann

Sewing Supplies:

- Husqvarna Viking Embroidery Machine
- Husqvarna Viking 4D Family Portrait Embroidery Software
- Robison Anton Flesh Tone Threads
- Robison Anton •Embroidery Bobbin Thread
- Mettler Silk Finish Cotton Sewing Thread
- Cotton background fabric
- Cut-Away stabilizer
- Inspira Embroidery or Topstitch Needle size 90
- Husqvarna Viking Sensor Q foot
- Havel's Scissors
- Husqvarna Viking 8 Spool Thread Rack #412481603
- Husqvarna Viking Open Toe Spring Action Foot #412860645
- Rowenta First Class Iron
- Dreamworld Sew Steady Acrylic Table
- Steady Betty Pressing Surface
- EQ Printable Fabric Cotton 200 Thread Count (6 sheets)
- EQ Printable Fabric Cotton Sateen (6 sheets)
- Warm Cotton Batting

When Sue received the quilt, a surprise, at Husqvarna Viking Convention she was overwhelmed with this special gift. When her son Bruce saw it, he was “blown away” by the stitching and said, “Wow Mom, this is unbelievable! This memory quilt will outlive you and me and will be in our family for generations to come”.



A tip from VSM Software after making this quilt is when embroidering a large quilt, embroider from the center of the quilt out. Sue showed the “blueprint” that was printed in the software to show the layout and the best way to embroider it.

A smaller family quilt shows the Davis family and a great way to frame the pictures. There are many frames and other elements in the program for this purpose.




The Husqvarna Viking 4D Family Portrait saves all your family information once you have entered it and gives you many, many family tree layouts for stitching them. You can also stitch pictures from trips, or of special people. Family Portrait also does a beautiful job turning pictures of buildings, etc. into stitches as in this memory picture from a trip to St Petersburg, Russia done by Cathy Clark.




4D Family Portrait Happy Anniversary Pillow

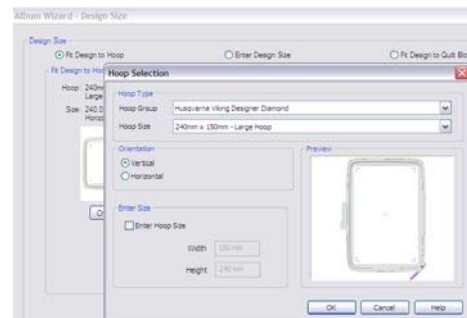


A good friend of Sue’s, Millie Kaiser, Husqvarna Viking Retailer in Columbia, MO gifted the picture we used on the show to Sue and Herb. It was taken on a cruise they were all on and Sue and Herb had to leave the cruise early to present a program so when Millie saw the picture she liked it and bought it for Sue. Julie, Susan and Marie decided it would be fun to use the Husqvarna Viking 4D Embroidery Software to create a Happy Anniversary pillow for Sue and Herb.

1. Open 4D Family Portrait  Create a new family if necessary or leave the open family. We will be creating the picture using the ExpressPortrait Wizard.







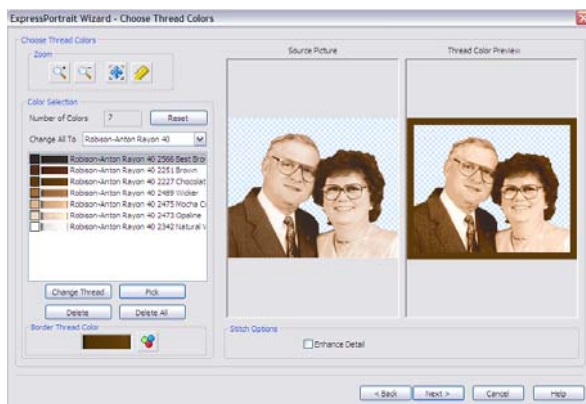
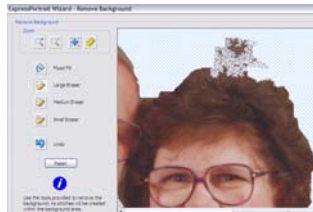
2. Click ExpressPortrait Wizard  on the left side of the screen.
3. Choose Create Sepia Effect Portrait Embroidery then click Next. This will take the colored picture and make it a sepia tone picture. This means the color is automatically removed by the 4D Family Portrait software and the picture becomes a sepia brown tone picture for a very vintage look.





4. On the Design Size page, choose Custom PortraitStitch. Set the Width to 120mm and the

Height to 100mm.

- Leave the Shape as Rectangle then click Next.
- Click View Picture .
- Browse  to your picture you wish to use. We used a picture of Sue and Herb. Then click Next.
- Rotate your picture if necessary. We did not need to rotate the picture, just click Next.
- On the Crop Picture page, crop out most of the picture, focusing on the faces then click Next.
- On the Remove Background page, use the Erasers  to remove as much of the background as possible then click Next.
- On the Picture Options page, notice the picture has been changed to Sepia tones. Also notice how Autolevel makes your lights brighter and your darks darker which allows the wizard to better create the picture in stitches.
- Click Save Picture  and save the picture in your C:\4DEmbroidery\MyPics folder as the altered picture.
- Click Next.
- On the Choose Thread Colors page, click the drop down arrow next to Change All To and choose Robison-Anton Rayon 40 because Robison Anton has the perfect colors to create stitched pictures in 4D Family Portrait including the 2 Flesh Tone thread colors.



- Change the Border Thread Color  to a color used in your embroidery. We changed ours to Robison-Anton Rayon 40 color 2227 – Chocolate.
- Leave Enhanced Detail unchecked then click Next to create the embroidery design.
- On the Design Preview page, click Save As






Embroidery  and save the design in your C:\4DEmbroidery\MyDesigns folder.

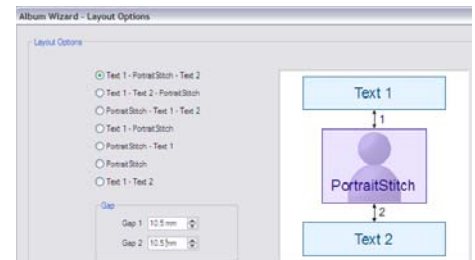
- Click Finish to close the ExpressPortrait Wizard.








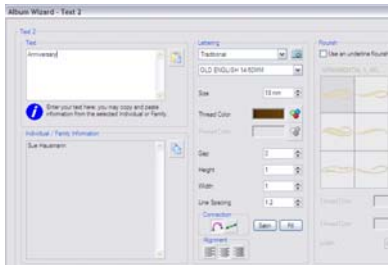
Once the embroidery design has been created, you can create beautiful scrapbook pages or even pillows!

Create the Pillow Front Design

- Click Embroidery Album Wizard  found on the left hand side of the screen.
- On the Design Size page, choose Fit Design to Hoop then click Change Hoop.
- Set the Hoop Group to Husqvarna Viking Designer Diamond and the Hoop Size to 240mm x 150mm – Large Hoop.
- Set the Orientation to Vertical then Click OK.
- Click Next.
- On the Layout Options page, choose Text 1 – PortraitStitch – Text 2.
- Set the Gap 1 and the Gap 2 to 10.5 mm then click Next.
- On the Select PortraitStitch page, Under Custom, click View PortraitStitch .
- Browse  and find your saved PortraitStitch in your C:\4DEmbroidery\MyDesigns folder.
- Click Next.
- On the Text 1 page in the Text box, we typed 'Happy'.
- Under Lettering, we set the category to Traditional then clicked View Font .
- Use the arrow keys on your keyboard to find OLD ENGLISH 14-50MM then click OK.
- Set the Size to 18 mm and change the Thread Color  to a color used in your embroidery. We choose Robison-Anton Rayon 40 - 2227 – Chocolate again.



15. Remove the checkmark from Use and underline flourish then click Next.
16. On the Text 2 page, we typed 'Anniversary' in the Text box.
17. Change the category to Traditional then clicked View Font .
18. Use the arrow keys on your keyboard to find OLD ENGLISH 14-50MM then click OK.
19. Set the Size to 18 mm and change the Thread Color  to a color used in your embroidery. We choose Robison-Anton Rayon 40 - 2227 – Chocolate again.
20. Remove the checkmark from Use and underline flourish then click Next.
21. On the Choose Frame Page, select Place a frame to fit inside the design area. This will create a border to fit inside the hoop we selected.
22. Click the drop down arrow and choose CLASSICAL 1_AFR then choose the bottom row, middle frame.
23. Change the Thread Color  to a color used in your embroidery. We choose Robison-Anton Rayon 40 - 2227 – Chocolate again.
24. Set the Border Width to 3.0 mm then click Next to create your page.
25. Click Save as Embroidery  and save the design in your C:\4DEmbroidery\MyDesigns folder.
26. Click Send 1  to directly send the design to your embroidery machine, your USB Embroidery Stick or write to a CD for use in a peripheral CD drive and embroider your picture in stitches.



up on the wrong side of your embroidery.

When you stitch 4D Family Portrait embroideries, it has a number of Robison Anton thread colors so it is handy to use your Husqvarna Viking 8 Spool Thread Rack. There are numbers on the rack to place your embroidery threads in order before beginning to embroider.

Once your embroidery is complete, remove it from the hoop and place it face down on the Steady Betty pressing surface and press with your Rowenta First Class iron. The Steady Betty surface is padded and lets the embroidery sink in without flattening it and the non slip surface holds the embroidery in place while you press.

If you do not have an embroidery machine, you embellish fabric printed pictures with free motion stitching. First print your pictures on EQ Printable Fabric Sheets. These are quality fabric with a plastic backing that carries the fabric through the printer. Place the printer fabric in your ink jet printer and select Best Quality print. We suggest printing on a piece of paper first to check the image and position and to check which side of the paper/fabric your printer prints. The test print can be done in Draft Quality print.

Once the fabric is printed, follow the instructions on the EQ package to “treat” the picture to set the color. Place on a paper towel until dry, then press.

Sue put the Open Toe Free Motion Spring Action Foot on her Husqvarna Viking Designer Diamond and selected straight stitch A2. For free motion stitching touch Free Motion Spring Action in the SET menu. Consult your machine instruction book to learn how to set up your machine for straight stitch free motion embroidery. Insert an Inspira Embroidery needle size 90 and thread with Robison Anton Flesh Tone threads on top and bobbin thread in the bobbin. Be sure to use your Dreamworld Sew Steady Acrylic Extension Table for free motion. The large smooth surface makes free motion easy.

Place a piece of Warm Cotton Batting under your printed picture, place it under the foot on the Sew Steady table and move the fabric to free motion stitch details on the printed picture.

For the Quick Project, Susan Pfaff taught how to take your 4D Family Portrait or free motion embellished picture into a pillow.

Hoop the fabric with two layers of Cut-Away stabilizer. It is important to stabilize well because the portrait will have a great deal of stitches. Put an Inspira size 90 embroidery or topstitch needle and put on the Sensor Q Foot and select Spring Action Free Motion in the SET menu. We suggest turning off the automatic Jump Stitch Cut in the SET menu because when you use the automatic Jump Stitch Cut it pushes the threads to the wrong side and with so many there will be a great deal of thread build



2905 Quick Project Portrait Pillow with Susan Pfaff

Susan Pfaff joined Sue and Julie to make the Happy Anniversary Portrait Pillow using the Family Portrait in stitches or the printed fabric picture. Susan loves to use the serger and created the entire pillow including the piping detail on her Husqvarna Viking Huskylock.

Sue and Susan discussed what type of thread to use on your serger. Mettler thread from American & Efried is excellent quality thread for sergers. Sue suggests always using quality thread on your serger as it will give the best result, stitch quality, thread tension and no-hassle serging. The Mettler thread comes on mini-cones for your serger in several different types for your different projects.

Mettler Metrolene Semi-Transparent extra fine 100 % Polyester thread comes on a 2187 yard cone in 14 colors. It is especially designed for finishing seams, heirloom serging and other lightweight and fine fabrics for stitching you will hardly see or feel.

Mettler Metracor 100% Polyester is the thread designed for all your basic serging needs such as finished seams, seam and overcast serging on wovens, and for the needle and lower looper on rolled edge. Metracor comes in two different sizes, 1094 yard cone in 24 colors and 2734 yard cone in 12 colors.

Mettler Metroflock is 100% Polyamid and has a fuzzy texture and stretch. This is excellent to thread in the upper loopers for rolled edge for complete coverage of the edge and provides a softer and stretchy seam for lingerie, sport, knits and swimwear. Its elasticity has been proven to perfection. The Metroflock cone has 1094 yards and comes in 24 colors. Because of the thickness and fuzzy texture of the thread, Mettler Metroflock is only used in the loopers, not in the needle.

Sue said the question she is most asked when people are purchasing their first serger is “How many colors of thread do I need to get started? Sue suggests first purchasing 4 or 5 cones of Mettler Metracor in the basis colors white, ecru, black (or navy) and gray. This thread is 100% polyester and is fine but strong



Sue Hausmann, Julie Mallory
and Susan Pfaff

Sewing Supplies:

- Husqvarna Viking Huskylock Serger
- Husqvarna Viking serger piping foot
- Mettler Metrocor Serger Thread 4 cones
- Havels scissors
- Family Portrait picture or picture printed on fabric
- 1/2 yard Fabric to complement colors in stitched picture
- 1/8 yard fabric in contrasting color to cover cord for piping
- Rotary Cutter, Mat and Ruler
- 1/4” (6mm) Cording
- Pillow form or fiberfil stuffing

for all your basic serging needs. You will often see a ready made garment with a thread color that is basic on the seam finishing then a matching color for the actual sewing of the seams and finishing such as topstitching and buttonholes.

Sue shared that her “Mettler serger thread collection” continues to grow as she makes special outfits because she will purchase 5 cones to match her fashion fabric color.

Cut strips approximately 4” depending on the size you would like your finished pillow, from the fabric for the fabric “frame” around the picture.

Cut a 2” wide fabric strip across the width of the fabric to cover cording. Thread your Husqvarna Viking Huskylock Serger with Mettler Metrocor thread and set for 3 thread

sewing. Snap on your Huskylock Piping Foot. Place the cording on the wrong side of the strip and wrap the strip over it. Place the wrapped cord under the Piping Foot so the cord lays in the groove on the underside of the foot. Serge to cover the cord and trim the excess strip all in one step.

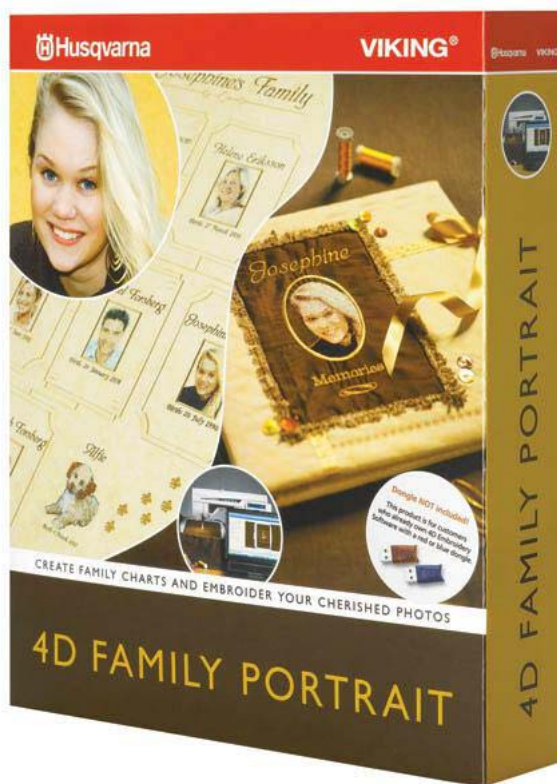
Use your rotary cutter, mat and ruler to trim the stitched photo to size. You will want to leave at least 1" outside the picture and add seam allowance on all 4 sides.

Continue to use the Huskylock Piping Foot and the Mettler Metrocor thread adding one cone to thread for 4 thread serging for a stronger seam. You will stitch the "frame" strip to the sides of the picture first then the top and the bottom. Start the piping under the foot and take a few stitches so the feed teeth are feeding it. Then place the picture under the presser foot right side up with the piping on top then place the "frame" strip on top, right side down. The piping is between the two layers. Serge the "frame" fabric to the two sides of the picture.

To add the top and bottom "frame" fabric, again start the piping under the foot. Place the side edge of the "frame" under the foot right side up, then place the bottom "frame" piece on top. Serge the bottom "frame" strip in place with the piping in between. Repeat for the top "frame" stitch.



Press the pillow top. Place it right sides together with the fabric and pin in place to cut the pillow back. Stitch around three sides of the pillow. Turn right side out, insert the pillow form or fiberfil and slipstitch the edge closed. If you prefer, use the invisible zipper foot to stitch an invisible zipper along one edge of the back and one edge of the pillow front. Open the zipper, stitch the other three sides right sides together, turn right side out, press and fill.



Thanks to the Underwriter
of our Quick Project:



www.robison-anton.com