



America Sews

with Sue Hausmann®

2906 3D Butterfly Pillow With Marsha Kirsch

Sewing Supplies:

- Husqvarna Viking Sewing and Embroidery Machine
- Husqvarna Viking Embroidery Collection 203 Special Techniques Butterflies
- Husqvarna Viking 120mm x 120mm Embroidery Hoop
- Inspira Embroidery Needle size 90
- Husqvarna Viking 7-Hole Cord Foot with Threader #412989945
- Husqvarna Viking Open Toe Foot #412800945
- Husqvarna Viking Specialty Candlewicking Foot #413162345
- Husqvarna Viking Clear View S Foot #412975145
- Husqvarna Viking Interchangeable Dual Feed #920219096
- Husqvarna Viking Changeable Quilter's Guide Foot #413155545
- Clear 1/4" Piecing Foot with Guide #412927445
- Hooping Board
- Husqvarna Viking Hoop Grip# 412738645
- Dream World Sew Steady Table
- Warm and Natural Batting
- Bias Tape Maker 12mm
- Havel's Gold Handle Scissors
- Havel's Surgical Seam Ripper
- Robison Anton Gold Metallic Thread
- Robison Anton 40 weight Rayon Thread
- Pearl Rayon
- Flower Stamens from Craft Store
- Sulky Fabric Solvy or Aqua Magic Water Soluble Fabric Stabilizer
- 1/2 yard cotton fabric
- 3/4 Yard Print Cotton for Pillow Back And Scalloped Flange and Bias Trim
- 16" Pillow Form



Sue Hausmann and Marsha Kirsch

Guest Marsha Kirsch Free Lance Educator joined Sue with a very elegant and fun butterfly pillow that teaches a variety of embellishment techniques with your Husqvarna Viking sewing and embroidery machine.

Marsha loves butterflies and was inspired by Husqvarna Viking Embroidery Collection 203, Special Techniques Butterflies by Helene Koch. Sue embroidered the colorful butterflies along the hem of a black linen skirt. The matching jacket features the same butterflies embroidered on Sulky Fabric Solvy water soluble stabilizer so that when the stabilizer was rinsed away the 3D butterflies were stitched to jewelry type pins so they can be pinned on to wear with the skirt and taken off to wear the solid black linen jacket with other things. All Sue's butterflies feature the "Thread Velvet bodies" which are stitched as a part of the embroidery design then the build up of satin stitch that has been especially digitized to stay put after cutting is "slit" with the Havel's Surgical Seam Ripper.

This collection of butterfly embroideries can be stitched on fabric or stitched on water soluble stabilizer to create free standing butterflies that are perfect for 3 Dimensional embellishments. The Thread Velvet bodies on the butterfly designs give them even more texture and dimension. In addition to the colorful embroidered butterflies there are some crochet type butterfly designs to stitch on fabric or water soluble stabilizer. The dimensional butterflies inspired the pillow, and Marsha designed it to teach techniques using specialty accessory feet, decorative stitches and her scalloped flange edge.

3-D Butterfly Pillow

Cut:

From fabric for Pillow Front

- One piece 17" x 17"

From fabric for Pillow Back

- One piece 17" x 17" for pillow back

- 20 ovals from pattern for Scalloped Flange

One 17" x 17" Warm and Natural Batting



Embroider the Butterflies:

Insert a new Inspira Embroidery size 90 needle.

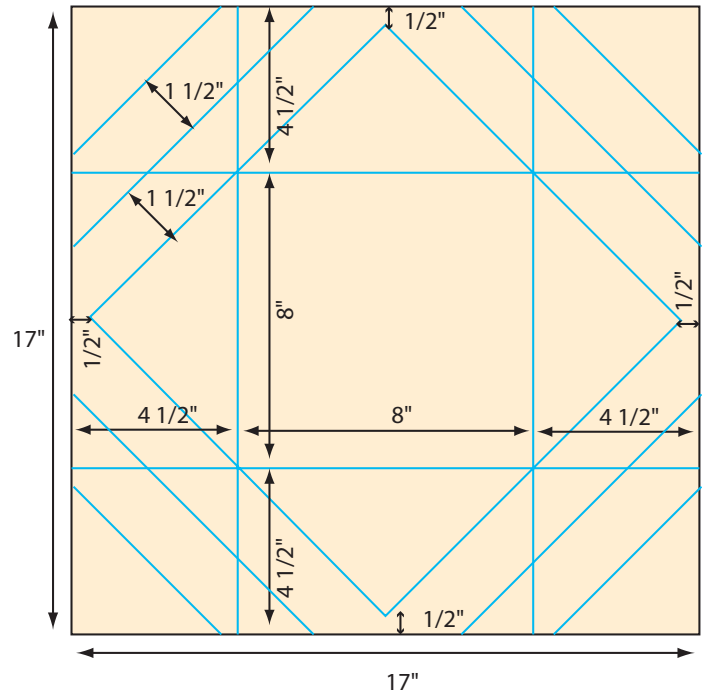
Hoop 2 layers of Sulky Fabric Solvy or Aqua Magic Stabilizer in the 120mm x 120mm hoop and embroider three butterfly designs. Marsha embroidered 2 of Design 10 and one of Design 7 from Husqvarna Viking Embroidery Collection 203. When stitched on water soluble stabilizer they will be free standing once the stabilizer is washed away. Marsha embroidered her 3D Butterflies with gold and brown color tones of Robison Anton 40 weight thread but threaded with Robison Anton metallic thread for the last colors to add a "sparkle" to her butterflies.

Once the butterflies are embroidered remove them from the hoop and soak in warm water to remove the stabilizer. Marsha left some of the stabilizer in the butterflies so they dried stiff for shaping on the pillow. She purchased a package of flower stamens from a craft shop, cut off

the bottom end and slid them underneath the center satin stitched "head" of the butterfly. Set the 3D Butterflies aside.

Sew:

Mark the fabric for the pillow front. Draw the pattern on the fabric using a water soluble marker. The 3D butterflies will be stitched on the square in the center later to showcase them as the focal point of the pillow. Mark the center 8" square. Extend the lines as shown, and then



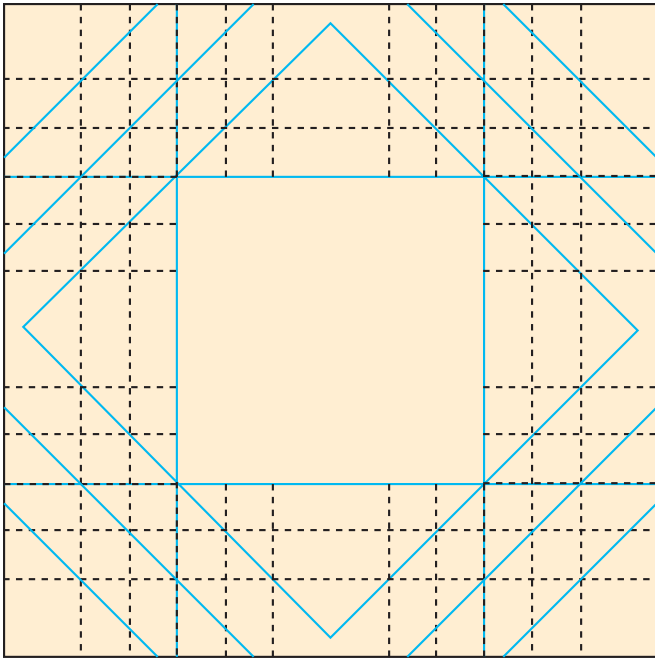
draw diagonal lines beginning 1/2" from the edge of the fabric to allow for seam allowance. Place a piece of batting on the wrong side of the pillow front. The batting can be cut slightly larger and trimmed later.

Attach your Husqvarna Viking Interchangeable Dual Feed and snap on the Changeable Quilter's Guide Foot. Stitch on the marked lines. Don't stitch around the square, that will be stitched with the candlewick stitch later. (See illustration on page 3)

Snap the Changeable Zig Zag foot on to the



Interchangeable Dual Feed and insert the right side quilting guide. Set the quilt guide approximately 1 1/2" to the right of the needle. Stitch next to the first marked line, allowing the guide to follow the stitches line. Quilt two to the right of the line, turn the fabric and quilt two to the left of the line.



Remove the Interchangeable Dual Feed Foot and snap on the Specialty Candlewicking foot. There are two Husqvarna Viking Candlewicking Feet available. The standard Candlewicking foot features a groove on the underside to feed over straight line Candlewicking stitches. The Specialty Candlewicking foot has a deeper and wider groove on the underside to feed over the wider candlewicking stitches on the Specialty Stitches "X" Menu on your Husqvarna Viking Designer Diamond.

Insert an INSPIRA® size 90 Embroidery needle or 90 Topstitch needle. For the Candlewicking embellishment, thread with 40 wt. Rayon thread on top and bobbin thread in the bobbin. Marsha selected Specialty Stitches



Menu "X", stitch 9. If you do not have Candlewicking stitches on your sewing machine, many computer machines will program Candlewicking stitches. Consult your machine manual.

Stitch around the center marked square.

For the multiple cord couched embellishment, use the threader to thread the 7 Hole Cord Foot from the top down with decorative cords such as pearl cotton in colors that coordinate with your pillow colors. Be sure your lengths of cord are long enough to go around the pillow. Tie a knot in the decorative cords at the end and pull under the foot and to the back. Snap the foot on.

Select a favorite decorative stitch. Choose a stitch that is open, and won't cover up the cords. Marsha used D2:47



Adjust the length and width if needed so the stitch goes over the cords from right to left and couches them in place without covering the cord. Hold the cords taut in front of the foot and stitch on the marked inner and outer diagonal lines.

For the bias trim embellishment, cut 1" wide strips on the bias for finished 1/2" wide bias trim. Feed the strips into a 12mm bias tape maker and pull the strip through as you press with steam to create the bias trim.

Stitch the bias trim onto the pillow with a decorative

stitch. Marsha selected E1:5 which is an Omnimotion serpentine stitch so she snapped on the Clear view S foot. This foot is extra wide and has a clear front to see as you stitch.

Stitch your 3D Butterflies in the square on the pillow front using a straight stitch and stitching in the ditch of the satin stitch on the butterflies body.

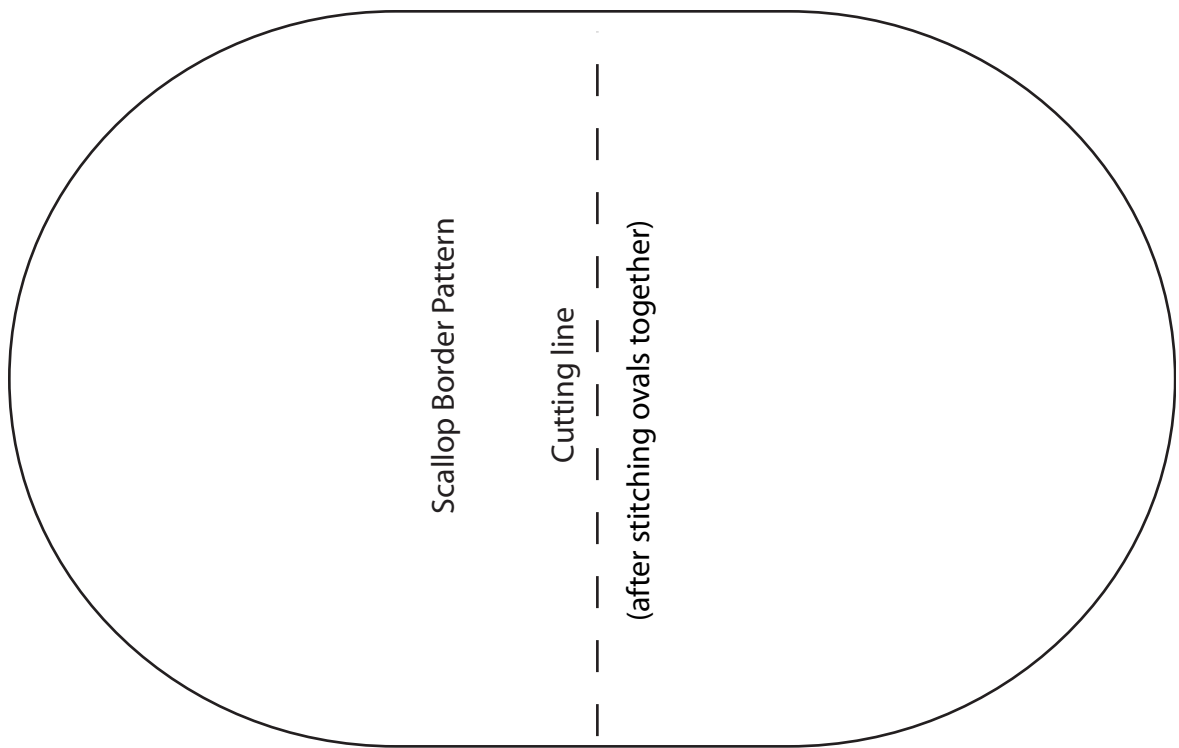
To make the scallop border, place two of the oval pieces right sides together. Snap on your Clear 1/4" Piecing Foot with Guide. Stitch all the way around using a 1/4" seam allowance. Trim with pinking shears.

Cut the oval in half, to create two "scallops". Turn right side out, press.

Arrange five scallops on each edge matching the raw edges and pin. Stitch in place, near the raw edge.

Place the pillow back right side together over the pinned scallops. Stitch leaving most of one side open for turning and to insert the pillow form.

Turn and insert the pillow form. Hand stitch the opening closed.



2906 Quick Project Serger Shadow Work Apron With Jody Hooker



Jody Hooker joined Sue and Marsha to demonstrate the Serger Shadow Work technique using the Cover Stitch and Chain Stitch on her Husqvarna Viking Huskylock Serger. Once she had created the decorative Shadow Work fabric, Jody showed how to create an adorable doll apron to fit any 18" doll. You can stitch the Serger Shadow Work on just about any sheer fabric and use it to create a unique embellished project.



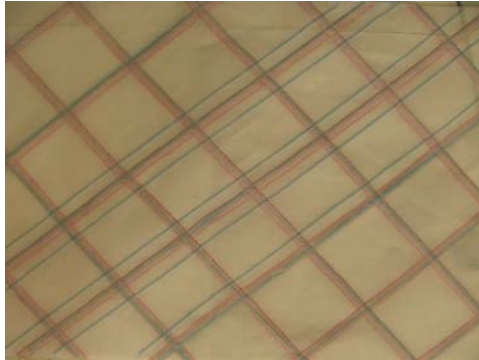
**Sue Hausmann, Marsha Kirsch
and Jody Hooker**

Sewing Supplies:

- Sewing Supplies
- Husqvarna Viking Huskylock 5 thread Serger
- 3 cones of Mettler Metrocor Serger Thread: Bold color for the Chain Looper
Pastel or light color for the needles
- Inspira Serger Needles size 90
- Cotton Organza Fabric 12" x 20"
- Gingham Elastic Ruffle or ruffle of your choice to finish edges of apron
- 18" of 1/4" ribbon for apron ties
- Fabric Marking Pen
- Wonder Tape

Prewash the cotton organza because this fabric will shrink. Starch and press it until it is crisp and stable.

Use your fabric marking pen to mark diagonal lines 1 1/2" apart on the 12" x 20" cotton organza fabric. Once you have marked diagonal lines in one direction, mark them in the opposite direction to create a "plaid" effect. You will stitch the serger shadow work on these lines. Sergers have needles and loopers. The loopers could be compared to the bobbin on your regular sewing machine because they bring threads from the underside to connect with the needle threads to form the serger stitches. Most 5 thread sergers have a third looper called the chain looper. This is the only looper you thread for the Chain Stitch and the Cover Stitch.



Thread your serger for Cover Stitch Wide with a bright or bold color of Mettler Metrocor on the looper because this color will show through the sheerness of the cotton organza fabric to create the shadow stitch. Put in Inspira size 90 Serger Needles and thread the needles with a lighter color of Mettler Metrocor thread that will blend with the fabric. Stitch the Cover Stitch over all the marked lines.

Once the Cover Stitch is sewn, set your Huskylock serger for Chain Stitch. Leave the bright color Mettler thread in the looper and for most sergers you will use the same settings as the Cover Stitch but remove one needle for a Chain Stitch. Leave the lighter color Robison Anton thread in the needle.

Turn the fabric over and start stitching the Chain Stitch along one side of the Cover Stitch with the bright wide side (wrong side) of the Cover Stitch side up so that the Chain part of the stitch in the bright color will be on right side as an embellishment. Once you have Chain Stitched along one side of all the Cover Stitch rows, Chain Stitch along the other side the same distance from the Cover Stitch.

Turn the fabric over and start stitching the Chain Stitch along one side of the Cover Stitch with the bright wide side (wrong side) of the Cover Stitch side up so that the Chain part of the stitch in the bright color will be on right side as an embellishment. Once you have Chain Stitched along one side of all the Cover Stitch rows, Chain Stitch along the other side the same distance from the Cover Stitch.

The chain stitch is often used as a basting or temporary stitching because you can pull one thread to pull out the entire row of stitching. Jody gave a tip for finishing the chain stitch and keeping the chain stitch from pulling out. When you reach the end of the fabric, raise the presser foot. Pull the needle thread towards you and cut the thread. Pull the fabric back and cut the chain thread. This will lock the chain stitch threads.

To make the apron for your 18" doll, cut the top panel 3 1/2" x 3 1/2". Taper it in 1/2" on each side so the "waist" will be narrower. Cut the skirt 8" x 13". Cut the bottom edge of the skirt into a curve.

Thread your Huskylock for Cover Stitch Narrow and stitch the purchased ruffle first to the side edges of the apron top, then across the top edge and the side and curved bottom edge of the skirt.



Jody's tip is to hold the ruffle trim in place with Wonder Tape for stitching.

Gather the top edge of the skirt and stitch it to the lower edge of the apron top. Add narrow ribbon at the top of the apron to tie it around the doll's neck.

Enjoy the Serger Shadow Work technique to create collar and cuffs and other designer embellishments for your projects.

Thanks to the Underwriter
of our Quick Project:



www.robison-anton.com