



America Sews

with Sue Hausmann®

2908 Personalize with Monograms With Julie Mallory

One of the most popular creative details we see today in all the upscale stores and catalogues is monograms. A monogram or lettering will add the “personal touch” to just about everything you can make or buy.

Julie Mallory joined Sue to demonstrate new ways for all home embroiderers to stitch professional monograms and lettering in the same styles as the industrial embroidery companies thanks to a new software program created for all embroidery machines, the Husqvarna Viking 4D ExpressMonogram Wizard. This program is available as a stand alone – called the Inspira Monogram and Vision program or as an add on to your 4D Embroidery, 4D Embroidery Extra or 4D Professional Embroidery System and saves in formats for all embroidery machines. The professional styles of monograms in this program make it easy to make your husband’s shirts look like those purchased from the most expensive shops.



Embroidering a professional monogram onto a plain towel, pillow, shirt, tie, blouse, pillowcase and “sew” much more turns your plain item into a fabulous gift, home dec accessory and even opens the door to start your own cottage industry monogram and embroidery business. One of the things that makes embroidering monograms very appealing is that they stitch out quickly.



Julie Mallory and Sue Hausmann


Sewing Supplies:

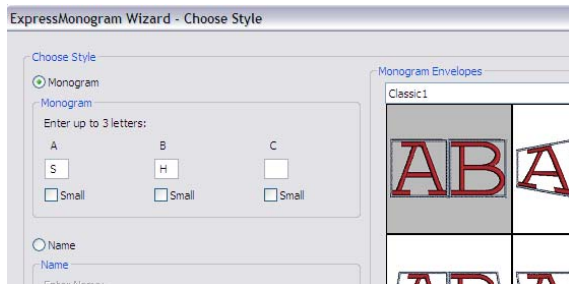
- Husqvarna Viking Sewing and Embroidery Machine
- Husqvarna Viking 4D ExpressMonogram Wizard Software
- Husqvarna Viking Sensor Q Foot #412597545
- Inspira Embroidery Needle Size 80 or 90 to suit the fabric
- Inspira or Sulky Tear Away Stabilizer
- Inspira Dissolve A Way or Sulky Solvy Water Soluble Stabilizer
- Inspira Aqua Magic or Sulky Fabric Solvy Water Soluble Stabilizer
- Inspira Light and Soft Fuse On Stabilizer #140002983
- Sulky Tender Touch Stabilizer
- Inspira Light and Tacky Tear Away #140002979
- 40 weight Robison Anton or Sulky Embroidery Threads
- Rowenta Steam Generator Iron
- Havel’s Bent Blunt Trimming Scissors
- The Steady Betty Pressing Surface

Sue showed some antique monogrammed “his and hers” linen hand towels her grandmother stitched by hand. Today with your Husqvarna Viking embroidery and sewing machine you stitch the same monogram in a fraction of the time and effort.

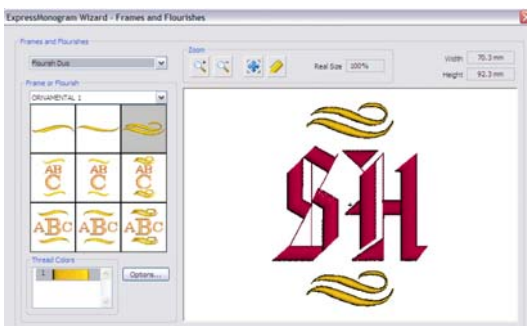
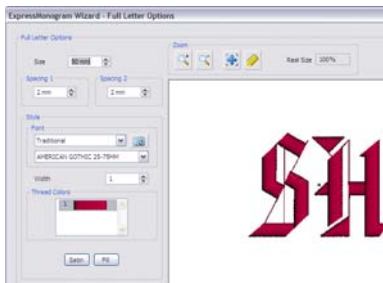
The rose colored suede Rayon blouse featured a monogram Julie created.

Create Monogram

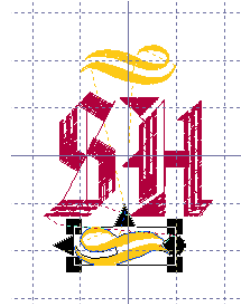
1. Click ExpressMonogram Wizard  and the wizard will open.
2. Check Monogram then Type ‘S’ in the first box and ‘H’ in the second box.



3. Remove the letter from the C box if there is one.
4. Make sure that both letters are full letters by removing any checkmarks from Small.
5. Under Monogram Envelopes, choose Classic1 and choose the first style - FF Classic1: 1 then click Next.
6. Set the Font to Traditional and AMERICAN GOTHIC 25-75MM.
7. Set the Size to 50 mm and the Spacing 1 to 2 mm then click Next.






8. Choose Select a frame or flourish then click Next.
9. On the Frames and Flourishes page, choose Flourish Duo.
10. Click the drop down arrow and choose ORNAMENTAL 1. Choose the flourish in the top row, last column.
11. Change the color to your liking then click Next.





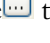
12. On the Design Preview, make sure ColorSort and Remove Overlap are checked and Save MNG File is checked as well, then click Finish. Your monogram is created!


For customers who own 4D Embroidery Extra or 4D Professional software:

13. Go to the Edit tab.
14. Click Box Select  then click and drag a box around the bottom flourish to select the entire thing.
15. Click the black triangle on the left side of the selection box to flip the flourish horizontally.
16. Go back to the Design tab.
17. Click Save As  and save the design in your C:\4DEmbroidery\MyDesigns folder as SH.vp3 then click Save.
18. Click Copy .

It is easy to create beautiful and professional monograms but placement on the garment or project can sometimes be a challenge. Julie uses her drawing tablet to click through the 4D Monogram Wizard, Sue uses a mouse. It is a personal choice.

View your Monogram on a Blouse

1. QuickLink to 4D Vision . (NOTE – only customers who own 4D Embroidery Extra or 4D Professional software have 4D Vision).
2. Choose Load Previously Saved and Garment then click Next.
3. Click View . Browse  to C:\4DEmbroidery\System\Bgrounds\Garments\General\BlousesShortSleeve3 then click OK.

4. Select the blouse color of your choice then click Next.
5. Click Paste  then click Finish.
6. Move your monogram to the correct position on the blouse.

Once you like the visual placement and the look of your monogram in 4D Vision, you will want to stitch it in the right place on the garment.

The 4D ExpressMonogram Wizard program features the placement guidelines used by professional embroiderers.



Go to C:\4DEmbroidery\Samples\Monogram\Pics\Bgrounds\Garments\General\Templates for guidelines to measure and mark your garment or project for the exact placement of the monogram. She shared she really like this because these guidelines will mean she will no longer embroider her monograms to close to the “armhole” of a blouse or jacket. Julie printed them out and put them in a binder for easy reference when embroidering.

The blouse Sue was wearing featured her monogram created in 4D ExpressMonogram Wizard with a beautiful new three color font. After creating this monogram in the software she changed the colors to suit her blouse then clicked print to print the actual size template to see if she liked the colors and to check placement.



Sue stabilized the area to be monogrammed on her blouses with a fusible tricot stabilizer, Sulky Tender Touch or Inspira Light and Soft Fuse on. Place the garment to be stabilized on a pressing surface with the entire garment supported by the surface or table. If the garment is “hanging off” the ironing board, the fabric will be distorted as you press the stabilizer in place. Roll out a length of stabilizer. Fusible tricot stabilizer stretches more in one direction. Place the most stretch up and down or lengthwise with the fusible side of the tricot on the area of the garment to be embroidered. Before pressing give the tricot a good blast of steam with your Rowenta Steam Generator Iron to preshrink it. Then press the tricot in place.

Put in a new Inspira Embroidery needle size 90 and thread with 40 weight Robison Anton or Sulky thread on the top and bobbin thread in the bobbin.

Hoop the Inspira Light and Tacky stabilizer and slide the hoop onto your Husqvarna Viking. Place the garment on the hoop and it will stick in place. Now is the time to do a final placement check. This is easy on your Husqvarna Viking Designer Diamond. Go to embroidery stitch out, touch Design Positioning, touch Step 1. Now touch the stylus to the design on the Interactive Color Touch Screen and the needle/hoop will move to the exact position that will be sewn. Sue likes to use her stylus to “trace around” the outside of the design on the screen as she watches the hoop move to see exactly where the design will stitch. It is easy to reposition your design if you desire. Consult your User’s Guide.

Touch FIX to baste the blouse to the stabilizer and help eliminate pulling of the fabric as you stitch.

Once the embroidery has finished, remove the FIX baste stitches, remove the garment from the hoop and tear away the Light and Tacky Tear Away. Pull the fusible tricot from the garment up to the design and trim the excess away with your Havel’s bent blunt point scissors.

Sue demonstrated a great way to press a monogram after it is stitched. It is important to press from the wrong side with the right side of the monogram on a padded pressing surface so that the right side of the monogram does not get “flattened by the iron. The Steady Betty

pressing surface is excellent for this because not only does it provide the padded surface you need to keep the “loft” of the stitching but The Steady Betty surface is made of a special material that keeps the fabric you are pressing or ironing from moving while you iron. The Steady Betty pressing mat is available in several sizes and as a full size ironing board cover. For more information go to www.steadybetty.com

One great place to embellish with monograms is the bathroom. Monogrammed towel sets make wonderful gifts. Herb and Sue recently had their bathrooms remodeled with new countertops, sinks, and tile. Because Sue can't take her new granite countertops to the store, to choose towels, she brought her Robison Anton and Sulky 40 weight Rayon thread bin into the bathrooms and selected colors to complement the granite. What fun to lay out all her threads on the counter and choose the ones that worked well with the granite.



So, instead of taking the granite to the store to decide on the towel sets to embroider, she took her bag of coordinating threads.

She entered her letters with the H for Hausmann in the center and the S for Sue on one side and H for Herb on the other side. Then selected a monogram style seen in very upscale bathroom linens and framed it with a border around it that “mimics” the style of the letters perfectly.

Put on embroidery unit and SET for the Sensor Q Foot and thread an Inspira Topstitch Needle size 90 with 40 weight Rayon Thread. It is up to you whether you match

the bobbin thread on towels because you will see the wrong side after embroidering. Sue usually uses bobbin thread. She also suggests canceling the Automatic Jump Stitch Cut in the SET menu because when it is on there will be many little thread build ups on the wrong side that will be visible on a towel.

Sue hooped a sturdy Tear Away stabilizer and slid the hoop onto her Designer Diamond. She placed the towel on the hoop and placed a piece of water soluble stabilizer on top then touched FIX to baste the towel to the stabilizer in the hoop.



As the monogram stitched on her towels, she noticed that when you create your monogram in 4D ExpressMonogram Wizard, the fonts have the underlay which is needed for the towels. Underlay is a first stitching of rather open embroidery stitches to stabilize the area to be embroidered before the dense stitching is sewn.

The towels were beautiful so she used the Resize Feature in her Designer Diamond to make the monogram smaller to stitch on the hand towels. You will want to use the Resize program either in your 4D Embroidery Software or on your Designer Diamond or Designer SE because Resize recalculates the number of stitches in the design so that the stitch density remains the same. Many machines will scale a design. This means the design can be made larger or smaller (usually up to 20%) however

the stitch count will stay the same. Sue recommends using Resize for your monograms on towels.

Sue was so please with the monograms on her towels she decided to monogram her bathroom rug! She wanted the monogram to be really large so she brought up the 200 x 260 hoop in her Designer Diamond Embroidery Edit. Then she touched Resize and dragged the monogram design to fill the hoop. She had purchased an off white rug with no rubber backing and stitched the design out on an old towel first just to see how it would stitch. The result was fantastic! Because the design was Resized, not scaled, the stitch count was recalculated to fill in the extra area.

For the rug she put in an Inspira size 100 Topstitch needle, hooped a heavy Tear-A-Way and Fix basted the rug to the Tear-A-Way with a layer of water soluble on top. It is very important to put on the Sensor Q Foot and to set for free motion spring action in the SET menu when embroidering heavier and napped fabrics so that as the stitch is formed, the foot comes down on the fabric and holds it to the stitch plate.

The guest “powder room” needed finger tip towels for

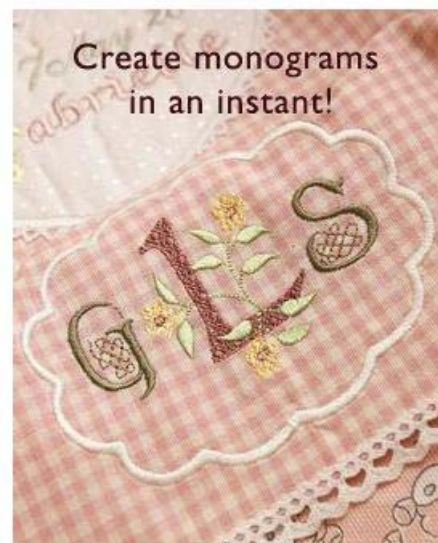


the little towel rack. It is hard to find fingertip towels in decorator colors so Sue cut a hand towel in half, monogrammed both halves then bound the cut end with a batik fabric to create two “fingertip” towels for her rack.

If you do not have the option of creating your monograms in the 4D ExpressMonogram Wizard software, you can use the fonts built in to your embroidery machine and create on the screen. There are also a number of Husqvarna Viking Embroidery Collections that stitch beautiful monograms. A favorite is the Vintage Alphabet by Kent State Collection

#66 and the Heirloom Alphabet Collection #9. These and many more are available for purchase from your local Husqvarna Viking Dealer or from www.myembroideries.com

If your machine is a more basic model, you can set your machine for free motion stitching and “write with your needle”. When Sue’s kids were growing up she free motion embroidered their names on their towels and their washcloths so they knew which ones were theirs and they also hung them up because Sue knew which was which when they were on the floor!



4D™ Express Monogram Wizard

4D™ EXPRESSMONOGRAM WIZARD is an add-on part of the HUSQVARNA VIKING® 4D™ Embroidery System. The add-on package requires 4D™ EMBROIDERY, 4D™ EMBROIDERY EXTRA or 4D™ PROFESSIONAL and no dongle is included.

Create one, two or three letter monograms instantly. Complement your monograms with Names and embellish your special monogram or name with frames and flourishes. Finally, audition your lettering on your chosen background.

Thanks for underwriting support:



www.steadybetty.com

2908 Quick Project Cute Kit Bag With Jody Hooker

Kit Bag

Jody joined Sue and Julie with a fun quick project. Make this cute kit bag to keep all your supplies together! It's perfect to take to classes with you, and to use in your sewing room.



Sue Hausmann, Julie Mallory
and Jody Jooker

Cut:

Cut one piece 22" x 12 1/2" from denim for outer bag.
Cut two pieces 4" x 8" from denim for side panels.
Cut three pieces 4" x 8" from lining for side panels and handle.

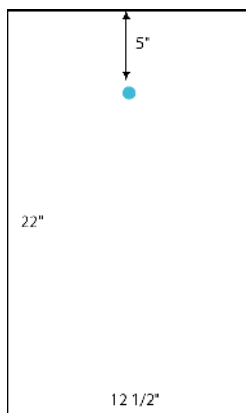
Cut two pieces 13 1/2" x 2" from denim for zipper panel.

Cut two pieces 13 1/2" x 2" from lining for zipper panel.

Cut two pieces 1 1/2" x width of fabric for piping.

Embroider:

1. On the 21" x 11 1/2" Denim for outer bag, mark the embroidery center 5" down from the 12 1/2" side and centered as shown.
2. Hoop INSPIRA® Tear Away Stabilizer and bring up your favorite sewing design. Embroider the design.
3. Using the pattern given, tape the two halves together at the dotted line. Place on your embroidered fabric and cut the curve. Repeat



Sewing Supplies:

- Husqvarna Viking Sewing and Embroidery Machine
- Robison Anton 40 wt. Rayon Embroidery Thread
- Robison Anton Bobbin Thread
- Mettler Sewing Thread
- Rowenta First Class Iron
- Sewing Designs
- The Steady Betty
- 1/2 yard Cream Colored Denim
- 3/4 yard Multicolor Print for Lining and Piping
- INSPIRA® Tear Away Stabilizer
- Cord for Piping
- Piping Hot Binding Tool
- 12" Zipper
- Husqvarna Viking Piping Foot #411851045

for the other end so both ends are curved.

4. Cut a lining piece this same size.

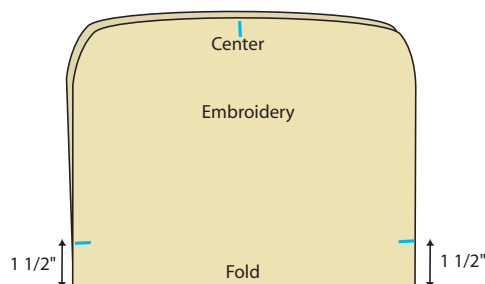
Sew:

1. Place one of your 13 1/2" x 2" denim pieces right sides together with the zipper. The zipper should be centered and there will be about 1/4" of fabric beyond each end. Place the lining right sides down on top of the zipper. Select left needle position. Stitch aligning the edge of your regular foot with the teeth of the zipper. When you reach the zipper pull, lower your needle,

raise your foot and slide the pull past the foot. Finish the stitching. Repeat for the other side of the zipper using your other two 13 1/2" x 2" pieces.

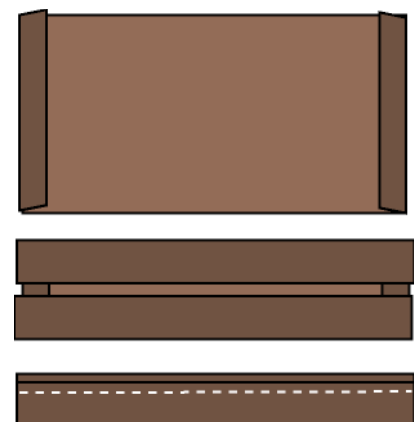
2. At your Serger, clean finish the two short sides.
3. Stitch your 1 1/2" x width of fabric pieces end to end. Fold around the piping cord. Snap on your piping foot and stitch the fabric around the cord.
4. Using your Piping Hot Binding Tool, trim the piping seam allowance to 1/4".
5. Stitch piping across both short ends of the zipper panel.
6. Place the 4" side of the 4" x 8" denim piece right sides together along the piped edge of the zipper panel. Place the 4" side of the 4" x 8" piece of lining fabric on the other side, so it is right sides together with your 4" x 8" denim piece. Your two 4" x 8" pieces should be right sides together with the zipper panel in between them. Stitch across the 4" end. Your piping foot should still be used. Repeat for the other end of the zipper panel.
7. Fold out the piece so they are wrong sides together and the full inset panel is formed. At your Serger, clean finish the two short sides.
8. Place the outer embroidered piece and the lining wrong sides together and serge the two pieces together.
9. Fold your embroidered piece wrong sides together matching the curved edges. Mark 1 1/2" up from the fold on each side as shown. Mark the center of the curved top piece.
10. Mark the center of the long edge of your zipper panel on each side.
11. Stitch piping on all four sides of the zipper/side panel. Start stitching 1" from the end of the piping. Clip at the corners to enable the piping to turn the corner. When you reach the end, stop 1" from where you started. Cut the piping so the two ends overlap by 1". Rip back the stitching and

cut the cords so that the ends will butt together. Fold



under one end of the fabric and wrap around the other end to finish the end. Finish stitching the piping to the panel.

12. Place the zipper panel right sides together with the embroidered piece matching one corner to the 1 1/2" mark and the center of the zipper panel to the marked center of the embroidered piece. Stitch, starting just after the corner and stopping just before the corner. Turn and check your stitching to be sure everything is all right. Your piping foot is still in place, and will stitch over the piping accurately.
13. Unzip the zipper. Start back where you left off and matching the corners to the 1 1/2" mark and the center on the other side to the center of your zipper panel, stitch the remaining seam.
14. Fold the short ends of the remaining 4" x 8" to the wrong side 1/4". Fold each long edge towards the middle and press. Fold again as shown and stitch.
15. Fold in half and stitch to one side of your bag below the zipper panel. Use your 4-way stitch program if possible to prevent having to turn the fabric.
16. Turn. Attach a charm to the zipper pull. Fill with your goodies! You are ready to go!

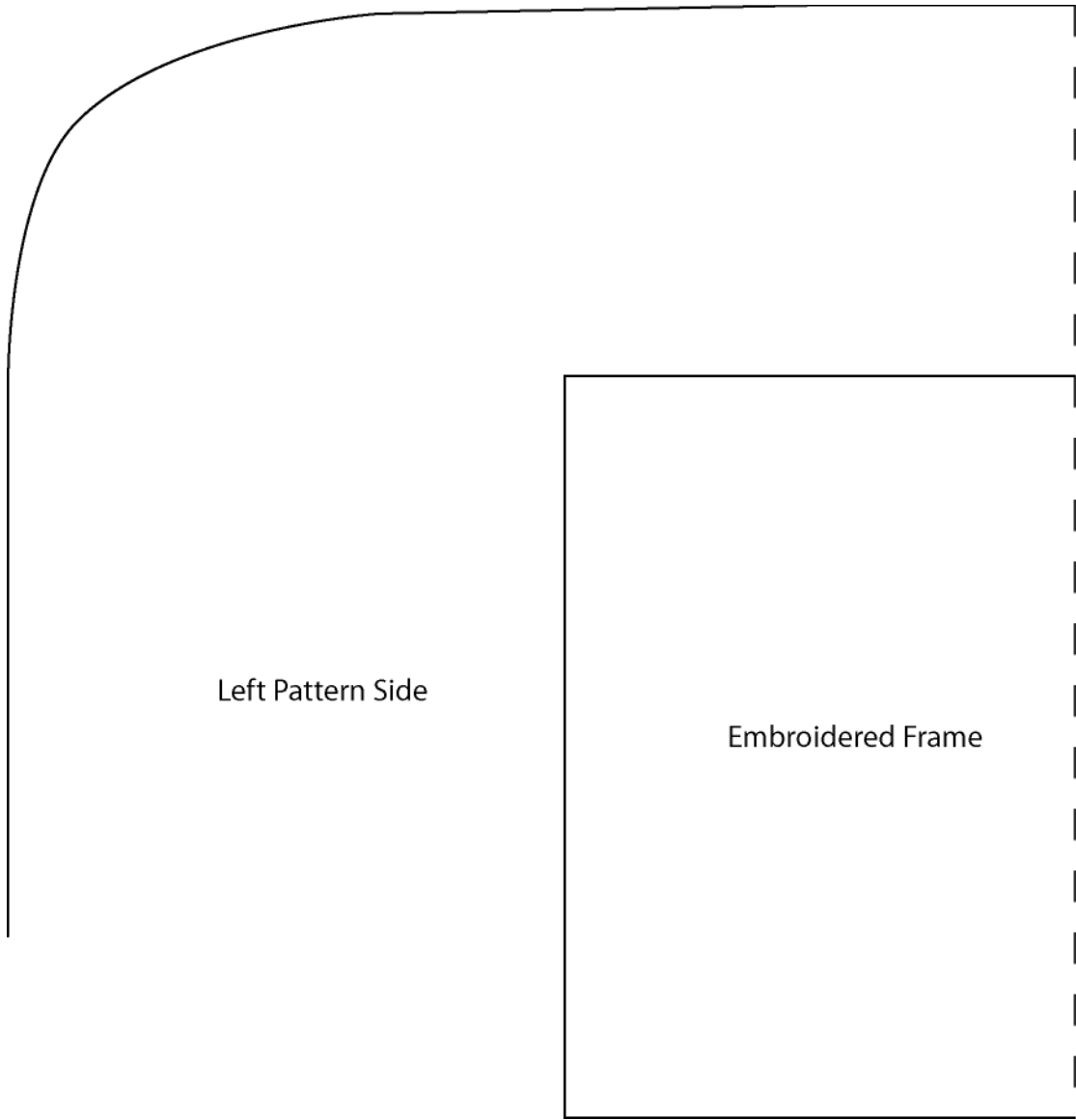


Thanks to the Underwriter
of our Quick Project:



www.robison-anton.com

7



Left Pattern Side

Embroidered Frame

